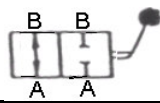
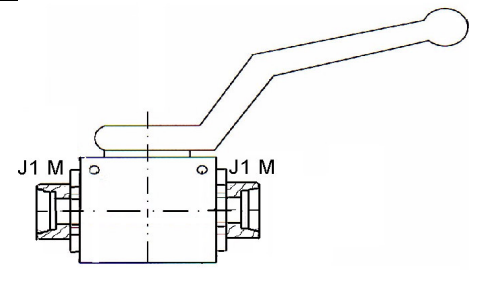
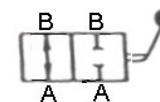
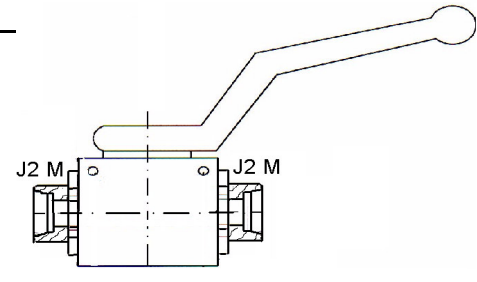
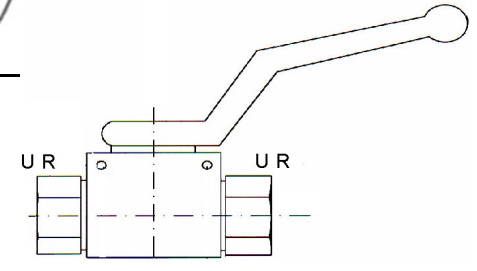
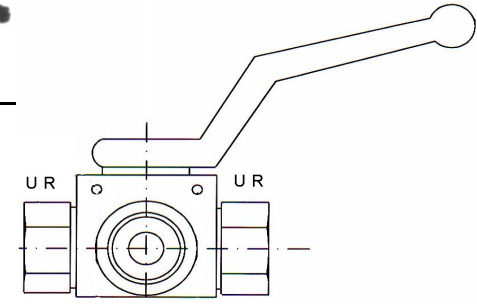
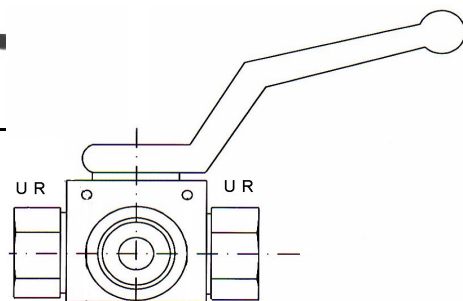
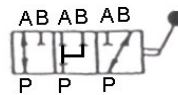


SLAVINE RUČNE VISOKOTLAČNE

RADNI TLAK	VRSTA VENTILA	OZNAKA PARKER	SIMBOL
	Kuglasti 2/2	KH - PL	
500 bara	VRV K2/2 NV 6 - J1 M12x1,5	KH 8 - PL	
500 bara	VRV K2/2 NV 6 - J1 M14x1,5	KH 12 - PL	
500 bara	VRV K2/2 NV 6 - J1 M16x1,5	KH 15 - PL	
500 bara	VRV K2/2 NV10 - J1 M18x1,5	KH 22 - PL	
500 bara	VRV K2/2 NV13 - J1 M22x1,5	KH 28 - PL	
500 bara	VRV K2/2 NV13 - J1 M26x1,5		
400 bara	VRV K2/2 NV19 - J1 M30x2		
350 bara	VRV K2/2 NV25 -- J1 M36x2		
350 bara	VRV K2/2 NV25 - J1 M45x2		
350 bara	VRV K2/2 NV25 - J1 M52x2		
	Kuglasti 2/2	KH - PS	
500 bara	VRV K2/2 NV 6 - J2 M16x1,5	KH 10 - PS	
500 bara	VRV K2/2 NV 6 - J2 M18x1,5	KH 14 - PS	
500 bara	VRV K2/2 NV 6 - J2 M20x1,5	KH 20 - PS	
500 bara	VRV K2/2 NV10 - J2 M22x1,5	KH 25 - PS	
500 bara	VRV K2/2 NV10 - J2 M24x1,5	KH 30 - PS	
500 bara	VRV K2/2 NV13 - J2 M30x2		
400 bara	VRV K2/2 NV19 - J2 M36x2		
350 bara	VRV K2/2 NV25 - J2 M42x2		
350 bara	VRV K2/2 NV25 - J2 M52x2		
	Kuglasti 2/2	KH R	
450 bara	VRV K2/2 NV 6 - U R1/4"	KH R1/4	
450 bara	VRV K2/2 NV10 - U R3/8"	KH R3/8	
450 bara	VRV K2/2 NV13 - U R1/2"	KH R1/2	
380 bara	VRV K2/2 NV19 - U R3/4"	KH R3/4	
340 bara	VRV K2/2 NV25 - U R1"	KH R1	
300 bara	VRV K2/2 NV25 - U R1.1/4"		
300 bara	VRV K2/2 NV25 - U R1.1/2"		
	Kuglasti 3/2	KH3/2 R	
380 bara	VRV K3/2 NV 6 - U R1/4"	KH3/2 R1/4	
380 bara	VRV K3/2 NV10 - U R3/8"	KH3/2 R3/8	
320 bara	VRV K3/2 NV13 - U R1/2"	KH3/2 R1/2	
300 bara	VRV K3/2 NV19 - U R3/4"	KH3/2 R3/4	
300 bara	VRV K3/2 NV25 - U R1"	KH3/2 R1	
300 bara	VRV K3/2 NV25 - U R1.1/4"		
300 bara	VRV K3/2 NV25 - U R1.1/2"		

Kuglasti 3/3		-
380 bara	VRV K3/3-O NV 6 - U R1/4"	
380 bara	VRV K3/3-O NV10 - U R3/8"	
320 bara	VRV K3/3-O NV13 - U R1/2"	
300 bara	VRV K3/3-O NV19 - U R3/4"	
300 bara	VRV K3/3-O NV25 - U R1"	
300 bara	VRV K3/3-O NV25 - U R1.1/4"	
300 bara	VRV K3/3-O NV25 - U R1.1/2"	



- Napomene:**
- Kod ovih se slavina pod nazivnom veličinom NV podrazumijeva promjer provrta slavine.
 - Sve se ove slavine po posebnoj narudžbi mogu naručiti bez rupa za pričvršćenje vijcima, kao što se i troputne slavine mogu naručiti sa vanjskim metričkim navojima.
 - Način rada troputnih slavina VRV K3/3-O odgovara troputnim razvodnicima VRV R3/3-O.
 - Podatke o dimenzijama i protocima pojedinih slavina moguće je dobiti na upit.