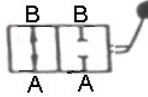
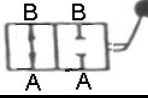


# SLAVINE RUČNE NISKOTLAČNE

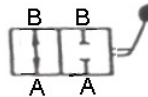
RADNI TLAK | VRSTA VENTILA | MATERIJAL | SIMBOL

	Kuglasti 2/2	Ms/Ni	
20 bara	VRN K2/2 NV 5,5 - G R1/8"	Ms/Ni	
	VRN K2/2 NV 5,5 - G R1/4"	Ms/Ni	
	VRN K2/2 NV 8 - G R3/8"	Ms/Ni	
	VRN K2/2 NV10 - G R1/2"	Ms/Ni	
	VRN K2/2 NV14 - G R3/4"	Ms/Ni	

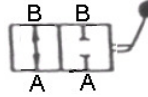


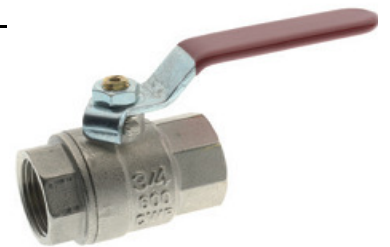
	Kuglasti 2/2	Ms/Ni	
20 bara	VRN K2/2 NV 5,5 - G R1/8" - U R1/8"	Ms/Ni	
	VRN K2/2 NV 5,5 - G R1/4" - U R1/4"	Ms/Ni	
	VRN K2/2 NV 8 - G R3/8" - U R3/8"	Ms/Ni	
	VRN K2/2 NV10 - G R1/2" - U R1/2"	Ms/Ni	
	VRN K2/2 NV14 - G R3/4" - U R3/4"	Ms/Ni	

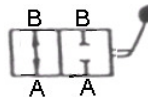


	Kuglasti 2/2	Ms/Ni	
20 bara	VRN K2/2 NV 5,5 - U R1/8"	Ms/Ni	
	VRN K2/2 NV 5,5 - U R1/4"	Ms/Ni	
	VRN K2/2 NV 8 - U R3/8"	Ms/Ni	
	VRN K2/2 NV10 - U R1/2"	Ms/Ni	
	VRN K2/2 NV14 - U R3/4"	Ms/Ni	

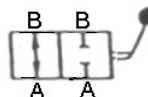


	Kuglasti 2/2	Ms/Ni	
45 bara	VRN K2/2 NV15 - U R 1/2"	Ms/Ni	
40 bara	VRN K2/2 NV20 - U R 3/4"	Ms/Ni	
35 bara	VRN K2/2 NV25 - U R1"	Ms/Ni	
30 bara	VRN K2/2 NV32 - U R1.1/4"	Ms/Ni	
30 bara	VRN K2/2 NV40 - U R1.1/2"	Ms/Ni	
25 bara	VRN K2/2 NV50 - U R2"	Ms/Ni	



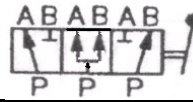
	Kuglasti 2/2 za plinove	Ms/Ni	
45 bara	VRNG K2/2 NV15 - U R 1/2"	Ms/Ni	
40 bara	VRNG K2/2 NV20 - U R 3/4"	Ms/Ni	
35 bara	VRNG K2/2 NV25 - U R1"	Ms/Ni	
30 bara	VRNG K2/2 NV32 - U R1.1/4"	Ms/Ni	
30 bara	VRNG K2/2 NV40 - U R1.1/2"	Ms/Ni	
25 bara	VRNG K2/2 NV50 - U R2"	Ms/Ni	



	Kuglasti 2/2	Ms/Ni	
20 bara	VRN K2/2 NV 5,5 - U R1/8"	L90K Ms/Ni	
	VRN K2/2 NV 5,5 - U R1/4"	L90K Ms/Ni	
	VRN K2/2 NV 8 - U R3/8"	L90K Ms/Ni	



	Kuglasti 3/3	Ms/Ni
20 bara	VRN K3/3-O NV 5,5 - U R1/8"	Ms/Ni
20 bara	VRN K3/3-O NV 5,5 - U R1/4"	Ms/Ni
20 bara	VRN K3/3-O NV 5,5 - U R3/8"	Ms/Ni



	Kuglasti 3/3	Ms/Ni
20 bara	VRN K3/3-Z NV 5,5 - U R1/8"	Ms/Ni
20 bara	VRN K3/3-Z NV 5,5 - U R1/4"	Ms/Ni
20 bara	VRN K3/3-Z NV 5,5 - U R3/8"	Ms/Ni



**Napomena:** Podatke o dimenzijama pojedinih slavina moguće je dobiti na upit.