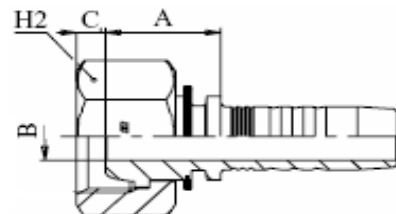


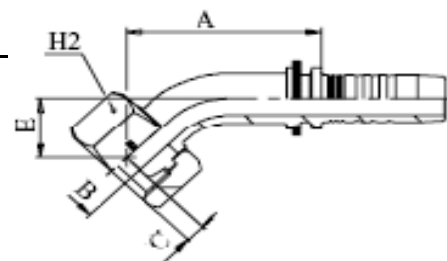
PRIKLJUČCI SA STANDARDNIM NOGICAMA "MANULI" ZA V.T. GUMENE, TERMOPLASTIČNE I PTFE OPLETENE CIJEVI

9

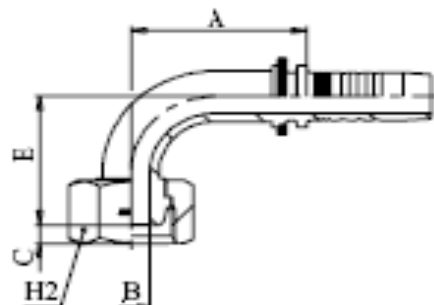
TIP	AOZNAKA / PRIMJENA	STANDARD / NAPOMENA
A M	DKM	DIN 20078 / 3863
A M10x1 - NP 3		
A M10x1 - NP 5		
A M12x1,5 - NP 5		
A M12x1,5 - NP 6		
A M14x1,5 - NP 6		
A M16x1,5 - NP 8		
A M18x1,5 - NP 10		
A M22x1,5 - NP 13		
A M26x1,5 - NP 16		
A M30x1,5 - NP 19		
A M38x1,5 - NP 25		
A M45x1,5 - NP 32		



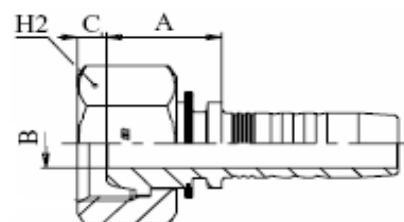
A M L45	DKM - 45	DIN 20078 / 3863
A M10x1 L45 NP 5		
A M12x1,5 L45 NP 6		
A M14x1,5 L45 NP 6		
A M16x1,5 L45 NP 8		
A M18x1,5 L45 NP 10		
A M22x1,5 L45 NP 13		
A M26x1,5 L45 NP 16		



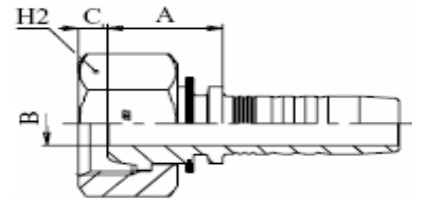
A M L90	DKM - 90	DIN 20078 / 3863
A M10x1 L90 NP 3		
A M10x1 L90 NP 5		
A M12x1,5 L90 NP 6		
A M14x1,5 L90 NP 6		
A M16x1,5 L90 NP 8		
A M18x1,5 L90 NP 10		
A M22x1,5 L90 NP 13		
A M26x1,5 L90 NP 16		
A M30x1,5 L90 NP 19		
A M38x1,5 L90 NP 25		



A R	DKR / DKOR	-
A R 1/8" - NP 3		
A R 1/8" - NP 5		
A R 1/8" - NP 6		
A R 1/4" - NP 6		
A R 1/4" - NP 8		
A R 3/8" - NP 6		
A R 3/8" - NP 8		
A R 3/8" - NP 10		
A R 3/8" - NP 13		
A R 1/2" - NP 8		
A R 1/2" - NP 10		
A R 1/2" - NP 13		
A R 5/8" - NP 13		
A R 5/8" - NP 16		
A R 3/4" - NP 13		
A R 3/4" - NP 16		
A R 3/4" - NP 19		
A R1" - NP 19		
A R1" - NP 25		
A R1.1/4" - NP 25		

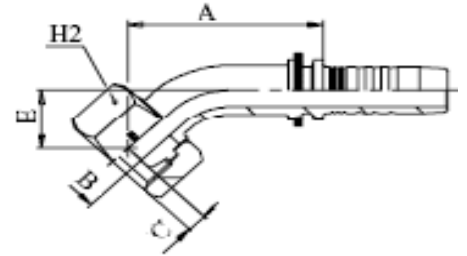


- A R 1.1/4" - NP 32
- A R 1.1/2" - NP 32
- A R 1.1/2" - NP 38
- A R 2" - NP 38
- A R 2" - NP 50



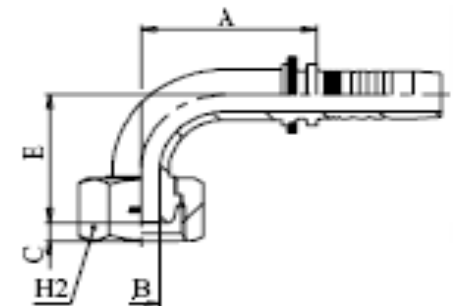
A R L45	DKR / DKOR - 45	-
---------	-----------------	---

- A R 1/4" L45 NP 6
- A R 3/8" L45 NP 8
- A R 3/8" L45 NP 10
- A R 1/2" L45 NP 10
- A R 1/2" L45 NP 13
- A R 5/8" L45 NP 13
- A R 5/8" L45 NP 16
- A R 3/4" L45 NP 16
- A R 3/4" L45 NP 19
- A R 1" L45 NP 19
- A R 1" L45 NP 25
- A R 1.1/4" L45 NP 32
- A R 1.1/2" L45 NP 38
- A R 2" L45 NP 50



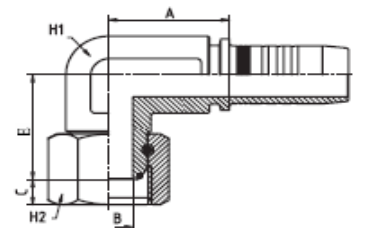
A R L90	DKR / DKOR - 90	-
---------	-----------------	---

- A R 1/8" L90 NP 3
- A R 1/8" L90 NP 5
- A R 1/8" L90 NP 6
- A R 1/4" L90 NP 6
- A R 1/4" L90 NP 8
- A R 3/8" L90 NP 6
- A R 3/8" L90 NP 8
- A R 3/8" L90 NP 10
- A R 1/2" L90 NP 10
- A R 1/2" L90 NP 13
- A R 5/8" L90 NP 13
- A R 5/8" L90 NP 16
- A R 3/4" L90 NP 13
- A R 3/4" L90 NP 16
- A R 3/4" L90 NP 19
- A R 1" L90 NP 19
- A R 1" L90 NP 25
- A R 1.1/4" L90 NP 25
- A R 1.1/4" L90 NP 32
- A R 1.1/2" L90 NP 32
- A R 1.1/2" L90 NP 38
- A R 2" L90 NP 50



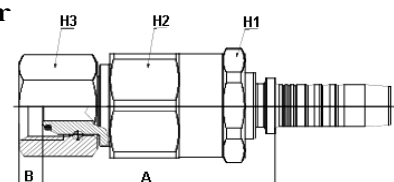
A R L90K	DKOR - 90 - K	-
----------	---------------	---

- A R 1/8" L90K NP 5
- A R 1/4" L90K NP 6
- A R 3/8" L90K NP 8
- A R 3/8" L90K NP 10
- A R 1/2" L90K NP 13
- A R 5/8" L90K NP 16
- A R 3/4" L90K NP 19
- A R 1" L90K NP 25

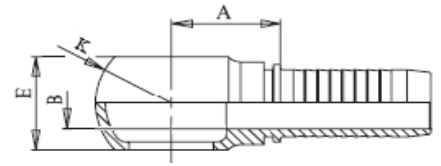


A R okr ***	DKOR rotofit	okretni priključak s ugrađenim ležajem
-------------	--------------	--

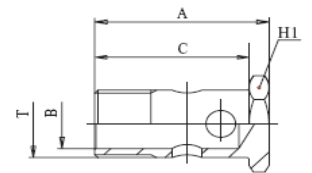
- A R 3/8" okr - NP 10
- A R 1/2" okr - NP 13
- A R 5/8" okr - NP 16
- A R 3/4" okr - NP 19
- A R 1" okr - NP 25



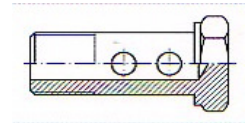
B (M)	RNM	DIN 7642
B 10 - NP 3		
B 10 - NP 5		
B 10 - NP 6		
B 12 - NP 6		
B 14 - NP 6		
B 14 - NP 8		
B 14 - NP 10		
B 16 - NP 8		
B 16 - NP 10		
B 16 - NP 13		
B 18 - NP 10		
B 18 - NP 13		
B 22 - NP 13		
B 22 - NP 16		
B 26 - NP 19		



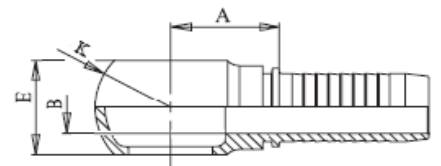
Šuplji vijci M	BFM	DIN 7643 - za 1 B (M) priključak
Šuplji vijak (1B) M10x1		
Šuplji vijak (1B) M12x1,5		
Šuplji vijak (1B) M14x1,5		
Šuplji vijak (1B) M16x1,5		
Šuplji vijak (1B) M18x1,5		
Šuplji vijak (1B) M22x1,5		
Šuplji vijak (1B) M26x1,5		



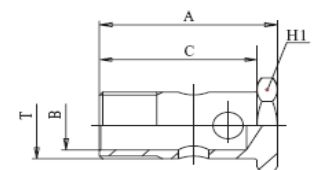
Šuplji vijci M	-	za 2 B (M) priključka
Šuplji vijak (2B) M10x1		
Šuplji vijak (2B) M12x1,5		
Šuplji vijak (2B) M14x1,5		
Šuplji vijak (2B) M18x1,5		



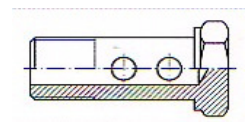
B (R)	RNR	-
B 1/8" - NP 3		
B 1/8" - NP 5		
B 1/4" - NP 6		
B 3/8" - NP 6		
B 3/8" - NP 8		
B 3/8" - NP 10		
B 1/2" - NP 10		
B 1/2" - NP 13		
B 5/8" - NP 16		
B 3/4" - NP 19		
B 1" - NP 25		



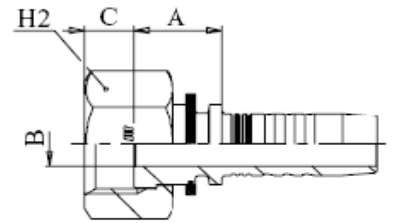
Šuplji vijci R	BFG	za 1 B (R) priključak
Šuplji vijak (1B) R 1/8"		
Šuplji vijak (1B) R 1/4"		
Šuplji vijak (1B) R 3/8"		
Šuplji vijak (1B) R 1/2"		
Šuplji vijak (1B) R 5/8"		
Šuplji vijak (1B) R 3/4"		
Šuplji vijak (1B) R 1"		



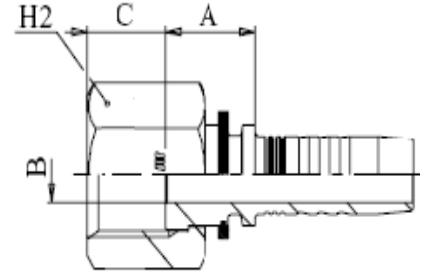
Šuplji vijci R	-	za 2 B (R) priključka
Šuplji vijak (2B) R 1/4"		
Šuplji vijak (2B) R 3/8"		
Šuplji vijak (2B) R 1/2"		
Šuplji vijak (2B) R 3/4"		
Šuplji vijak (2B) R 1"		



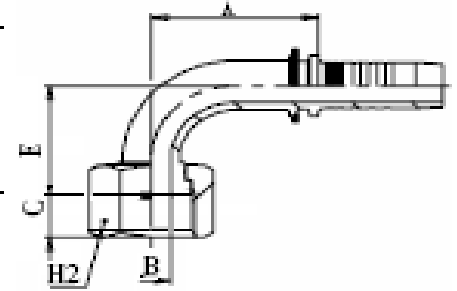
C R	DKR - F	-
C R 1/4" - NP 6		
C R 3/8" - NP 10		
C R 1/2" - NP 13		
C R 3/4" - NP 13		
C R 3/4" - NP 19		
C R 1" - NP 25		



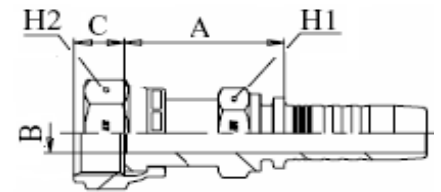
C R p	HIAB	produžena matica
C R 1/2" p - NP 8		
C R 1/2" p - NP 10		
C R 3/4" p - NP 13		
C R 3/4" p - NP 16		



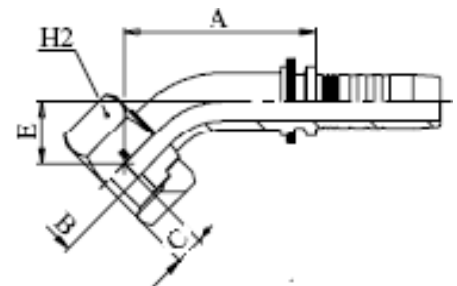
C R p L90	HIAB	produžena matica
C R 3/4" p L90 NP 13		
C R 3/4" p L90 NP 16		



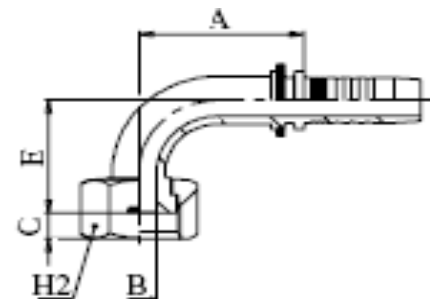
C UN/UNF/UNS	DKO (ORFS)	SAE J1453
C UNF 9/16" - NP 6		
C UN 11/16" - NP 6		
C UN 11/16" - NP 8		
C UN 11/16" - NP 10		
C UN 13/16" - NP 10		
C UN 13/16" - NP 13		
C UNS1" - NP 13		
C UNS1" - NP 16		
C UNS1" - NP 19		
C UN 1. 3/16" - NP 13		
C UN 1. 3/16" - NP 16		
C UN 1. 3/16" - NP 19		
C UN 1. 7/16" - NP 19		
C UN 1. 7/16" - NP 25		
C UN 1.11/16" - NP 32		
C UN 2" - NP 38		



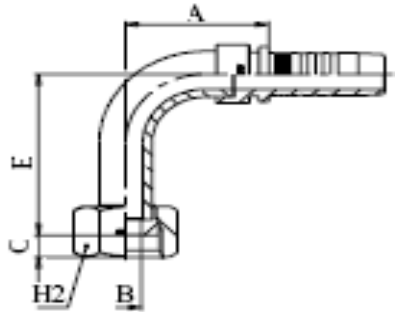
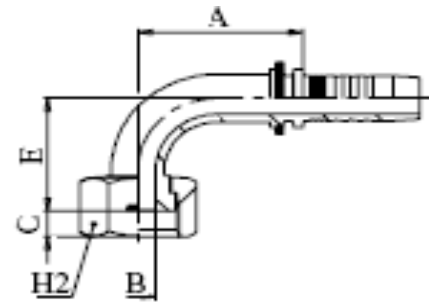
C UN/UNF/UNS L45	DKO - 45 (ORFS)	SAE J1453
C UNF 9/16" L45 NP 6		
C UN 11/16" L45 NP 6		
C UN 11/16" L45 NP 8		
C UN 11/16" L45 NP 10		
C UN 13/16" L45 NP 10		
C UN 13/16" L45 NP 13		
C UNS1" L45 NP 13		
C UNS1" L45 NP 16		
C UN 1. 3/16" L45 NP 16		
C UN 1. 3/16" L45 NP 19		
C UN 1. 7/16" L45 NP 19		
C UN 1. 7/16" L45 NP 25		
C UN 1.11/16" L45 NP 32		
C UN 2" L45 NP 38		



C UN/UNF/UNS L90	DKO - 90 (ORFS)	SAE J1453
C UNF 9/16" L90 NP 6		
C UN 11/16" L90 NP 6		
C UN 11/16" L90 NP 8		
C UN 11/16" L90 NP 10		
C UN 13/16" L90 NP 10		
C UN 13/16" L90 NP 13		
C UNS1" L90 NP 13		

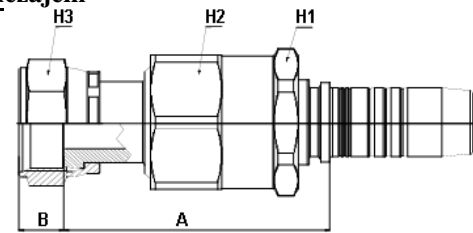


C UNS1" L90 NP 16
 C UN 1. 3/16" L90 NP 16
 C UN 1. 3/16" L90 NP 19
 C UN 1. 7/16" L90 NP 19
 C UN 1. 7/16" L90 NP 25
 C UN 1.11/16" L90 NP 32
 C UN 2" L90 NP 38

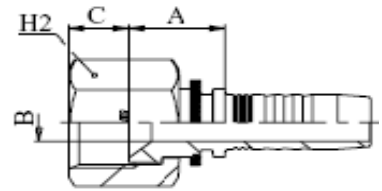


C UN/UNF L90P	DKO - 90 - P (ORFS)	SAE J1453
C UNF 9/16" L90P NP 6		
C UN 11/16" L90P NP 10		
C UN 13/16" L90P NP 10		
C UN 13/16" L90P NP 13		
C UN 1. 3/16" L90P NP 16		
C UN 1. 3/16" L90P NP 19		
C UN 1. 7/16" L90P NP 25		

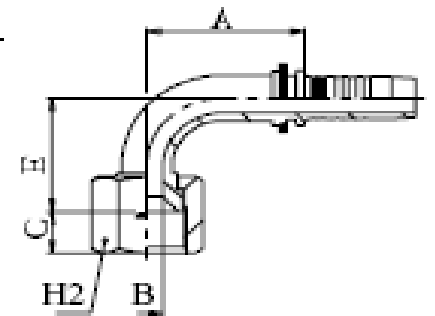
C UN/UNS okr ***	DKO rotofit (ORFS)	okretni priključak s ugrađenim ležajem
C UN 11/16" okr - NP 10		
C UN 13/16" okr - NP 13		
C UNS1" okr - NP 16		
C UN 1.3/16" okr - NP 19		
C UN 1.7/16" okr - NP 25		



D M	-	-
D M14x1,5 - NP 6		
D M16x1,5 - NP 8		
D M18x1,5 - NP 10		
D M22x1,5 - NP 13		
D M27x2 - NP 16		
D M33x2 - NP 19		
D M39x2 - NP 25		



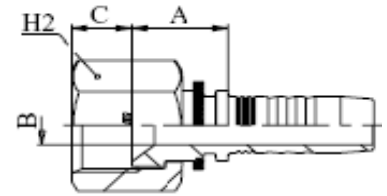
D M L90	-	-
D M14x1,5 L90 NP 6		
D M16x1,5 L90 NP 8		
D M18x1,5 L90 NP 10		
D M22x1,5 L90 NP 13		
D M27x2 L90 NP 16		
D M33x2 L90 NP 19		
D M39x2 L90 NP 25		



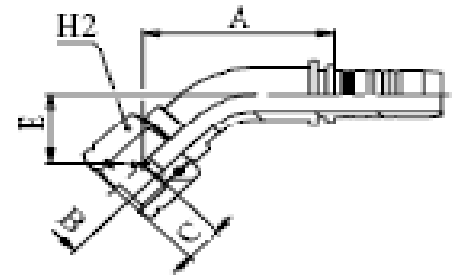
D UN/UNF	DKJ (JIC)	SAE J514
D UNF 7/16" - NP 3		
D UNF 7/16" - NP 5		
D UNF 7/16" - NP 6		
D UNF 1/ 2" - NP 6		
D UNF 1/ 2" - NP 8		
D UNF 9/16" - NP 6		
D UNF 9/16" - NP 8		
D UNF 9/16" - NP 10		
D UNF 5/ 8" - NP 10		
D UNF 3/ 4" - NP 10		
D UNF 3/ 4" - NP 13		
D UNF 7/ 8" - NP 10		
D UNF 7/ 8" - NP 13		
D UNF 7/ 8" - NP 16		
D UNF 7/ 8" - NP 19		
D UN1.1/16" - NP 13		
D UN1.1/16" - NP 16		



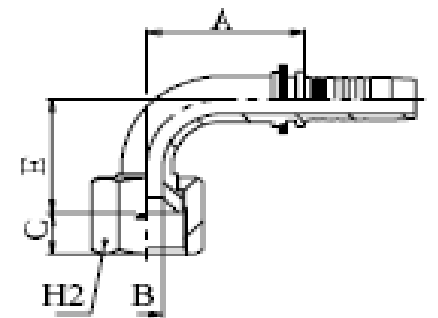
- D UN1.1/16" - NP 19
- D UN1.1/16" - NP 25
- D UN1.3/16" - NP 19
- D UN1.5/16" - NP 19
- D UN1.5/16" - NP 25
- D UN1.5/ 8" - NP 25
- D UN1.5/ 8" - NP 32
- D UN1.7/ 8" - NP 38



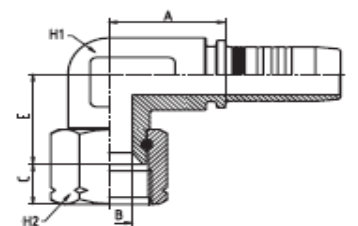
D UN/UNF L45	DKJ - 45 (JIC)	SAE J514
D UNF 7/16" L45 NP 6		
D UNF 1/ 2" L45 NP 6		
D UNF 9/16" L45 NP 6		
D UNF 9/16" L45 NP 8		
D UNF 9/16" L45 NP 10		
D UNF 3/ 4" L45 NP 10		
D UNF 3/ 4" L45 NP 13		
D UNF 7/ 8" L45 NP 13		
D UNF 7/ 8" L45 NP 16		
D UN1.1/16" L45 NP 13		
D UN1.1/16" L45 NP 16		
D UN1.1/16" L45 NP 19		
D UN1.3/16" L45 NP 19		
D UN1.5/16" L45 NP 19		
D UN1.5/16" L45 NP 25		
D UN1.5/ 8" L45 NP 32		



D UN/UNF L90	DKJ - 90 (JIC)	SAE J514
D UNF 7/16" L90 NP 5		
D UNF 7/16" L90 NP 6		
D UNF 1/ 2" L90 NP 6		
D UNF 1/ 2" L90 NP 8		
D UNF 9/16" L90 NP 6		
D UNF 9/16" L90 NP 8		
D UNF 9/16" L90 NP 10		
D UNF 5/ 8" L90 NP 10		
D UNF 3/ 4" L90 NP 10		
D UNF 3/ 4" L90 NP 13		
D UNF 7/ 8" L90 NP 10		
D UNF 7/ 8" L90 NP 13		
D UNF 7/ 8" L90 NP 16		
D UN1.1/16" L90 NP 13		
D UN1.1/16" L90 NP 16		
D UN1.1/16" L90 NP 19		
D UN1.3/16" L90 NP 19		
D UN1.5/16" L90 NP 19		
D UN1.5/16" L90 NP 25		
D UN1.5/ 8" L90 NP 32		
D UN1.7/ 8" L90 NP 38		

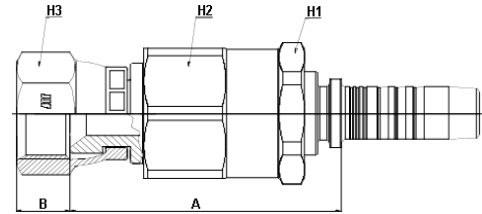


D UN/UNF L90K	DKJ - 90 - K (JIC)	SAE J514
D UNF 7/16" L90K NP 6		
D UNF 1/ 2" L90K NP 6		
D UNF 9/16" L90K NP 6		
D UNF 9/16" L90K NP 10		
D UNF 3/ 4" L90K NP 10		
D UNF 3/ 4" L90K NP 13		
D UNF 7/ 8" L90K NP 13		
D UN1.1/16" L90K NP 19		
D UN1.5/16" L90K NP 25		



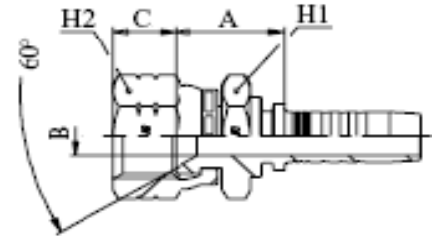
D UN/UNF okr ***	DKJ rotofit	okretni priključak s ugrađenim ležajem
------------------	-------------	--

D UNF 9/16" okr - NP 10
D UNF 3/ 4" okr - NP 13
D UNF 7/ 8" okr - NP 16
D UN1.1/16" okr - NP 19
D UN1.5/16" okr - NP 25



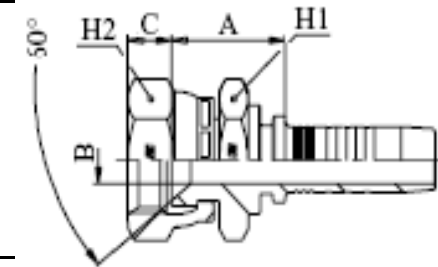
DKOM M	JISK	JIS (KOMATSU - unutarnji konus 60°)
--------	------	-------------------------------------

DKOM M14x1,5 - NP 6
DKOM M14x1,5 - NP 10
DKOM M16x1,5 - NP 8
DKOM M18x1,5 - NP 10
DKOM M22x1,5 - NP 13
DKOM M24x1,5 - NP 16
DKOM M30x1,5 - NP 19
DKOM M33x1,5 - NP 25
DKOM M36x1,5 - NP 32
DKOM M42x1,5 - NP 38



DTOY R	JIST	JIS (TOYOTA - unutarnji konus 60°)
--------	------	------------------------------------

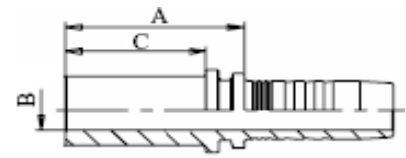
DTOY R 1/4" - NP 6
DTOY R 3/8" - NP 10
DTOY R 1/2" - NP 13
DTOY R 3/4" - NP 19
DTOY R1" - NP 25



F1	BEL	DIN 2353
----	-----	----------

F1 6 - NP 5
F1 6 - NP 6
F1 8 - NP 6
F1 10 - NP 8
F1 12 - NP 10
F1 15 - NP 10
F1 15 - NP 13
F1 18 - NP 16
F1 22 - NP 16
F1 22 - NP 19
F1 28 - NP 25

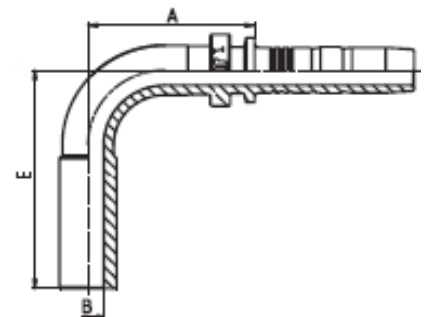
BEL 6 - L
BEL 6 - L
BEL 8 - L
BEL 10 - L
BEL 12 - L
BEL 15 - L
BEL 15 - L
BEL 18 - L
BEL 22 - L
BEL 22 - L
BEL 28 - L



F1 L90	BEL - 90	DIN 2353
--------	----------	----------

F1 6 L90 NP 5
F1 6 L90 NP 6
F1 10 L90 NP 8
F1 12 L90 NP 10
F1 15 L90 NP 13
F1 18 L90 NP 16
F1 22 L90 NP 19
F1 28 L90 NP 25

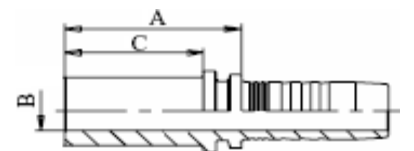
BEL - 90 6 - L
BEL - 90 6 - L
BEL - 90 10 - L
BEL - 90 12 - L
BEL - 90 15 - L
BEL - 90 18 - L
BEL - 90 22 - L
BEL - 90 28 - L



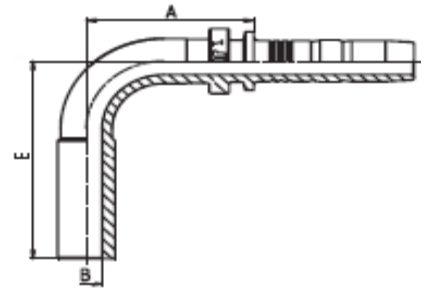
F2	BES	DIN 2353
----	-----	----------

F2 8 - NP 6
F2 10 - NP 6
F2 12 - NP 8
F2 14 - NP 10
F2 16 - NP 13
F2 20 - NP 16
F2 20 - NP 19
F2 25 - NP 19
F2 25 - NP 25

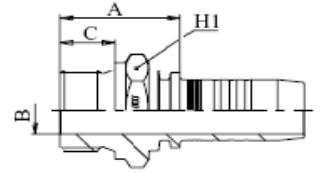
BES 6 - S
BES 10 - S
BES 12 - S
BES 14 - S
BES 16 - S
BES 20 - S
BES 20 - S
BES 25 - S
BES 25 - S



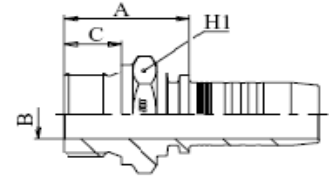
F2 L90	BES - 90	DIN 2353
F2 8 L90 NP 6	BES - 90 8 - S	
F2 12 L90 NP 8	BES - 90 12 - S	
F2 14 L90 NP 10	BES - 90 14 - S	
F2 16 L90 NP 13	BES - 90 16 - S	
F2 20 L90 NP 16	BES - 90 20 - S	
F2 25 L90 NP 19	BES - 90 25 - S	



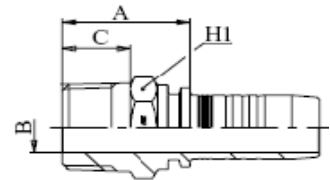
G M	AGM - F	-
G M10x1 - NP 5		
G M10x1 - NP 6		
G M22x1,5 - NP 10		
G M22x1,5 - NP 13		



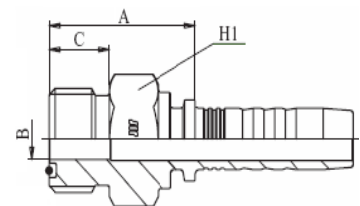
G R	AGR - F	-
G R 3/8" - NP 10		
G R 1/2" - NP 10		
G R 1/2" - NP 13		
G R 3/4" - NP 19		



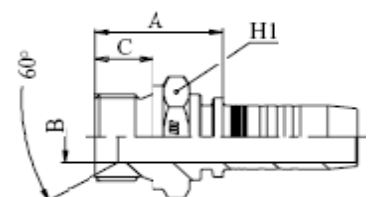
G R-K	AGR - K	konusni navoj
G R 1/8"K - NP 5		
G R 1/8"K - NP 6		
G R 1/4"K - NP 6		
G R 3/8"K - NP 8		
G R 3/8"K - NP 10		
G R 1/2"K - NP 10		
G R 1/2"K - NP 13		
G R 3/4"K - NP 16		
G R 3/4"K - NP 19		
G R 1"K - NP 25		



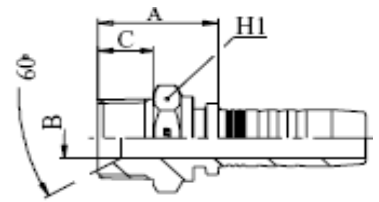
G UN/UNF/UNS	AGO (ORFS)	SAE J1453
G UNF 9/16" - NP 6		
G UN 11/16" - NP 6		
G UN 11/16" - NP 8		
G UN 11/16" - NP 10		
G UN 13/16" - NP 10		
G UN 13/16" - NP 13		
G UNS1" - NP 13		
G UNS1" - NP 16		
G UN 1. 3/16" - NP 16		
G UN 1. 3/16" - NP 19		
G UN 1. 7/16" - NP 19		
G UN 1. 7/16" - NP 25		
G UN 1.11/16" - NP 32		
G UN 2" - NP 38		



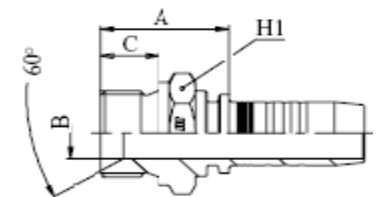
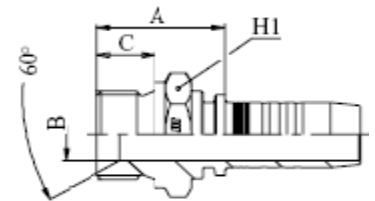
H M	AGM	-
H M12x1,5 - NP 6		
H M14x1,5 - NP 6		
H M16x1,5 - NP 8		
H M18x1,5 - NP 10		
H M22x1,5 - NP 13		
H M26x1,5 - NP 16		
H M30x1,5 - NP 19		
H M38x1,5 - NP 25		
H M45x1,5 - NP 32		



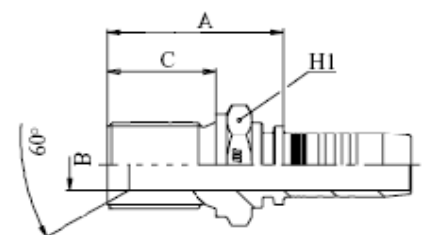
H NPT-K	AGN	SAE J516
H NPT 1/8"K - NP 3		
H NPT 1/8"K - NP 5		
H NPT 1/4"K - NP 6		
H NPT 3/8"K - NP 8		
H NPT 3/8"K - NP 10		
H NPT 1/2"K - NP 13		
H NPT 3/4"K - NP 16		
H NPT 3/4"K - NP 19		
H NPT1"K - NP 19		
H NPT1"K - NP 25		
H NPT1.1/4"K - NP 25		



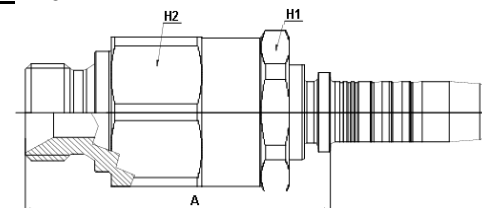
H R	AGR	-
H R 1/8" - NP 3		
H R 1/8" - NP 5		
H R 1/8" - NP 6		
H R 1/4" - NP 6		
H R 1/4" - NP 8		
H R 3/8" - NP 6		
H R 3/8" - NP 8		
H R 3/8" - NP 10		
H R 1/2" - NP 8		
H R 1/2" - NP 10		
H R 1/2" - NP 13		
H R 5/8" - NP 13		
H R 5/8" - NP 16		
H R 3/4" - NP 13		
H R 3/4" - NP 16		
H R 3/4" - NP 19		
H R1" - NP 19		
H R1" - NP 25		
H R1.1/4" - NP 25		
H R1.1/4" - NP 32		
H R1.1/2" - NP 32		
H R1.1/2" - NP 38		
H R2" - NP 38		
H R2" - NP 50		



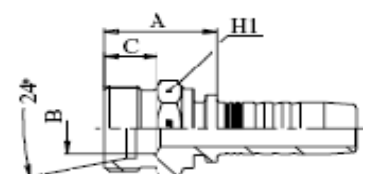
H R p	AGR - P	produženi navoj
H R 1/2" p - NP 13		
H R 5/8" p - NP 16		
H R 3/4" p - NP 19		



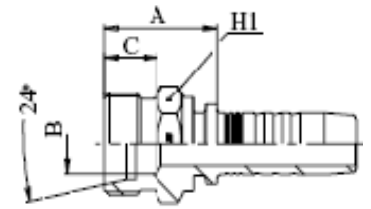
H R okr ***	AGR rotofit	okretni priključak s ugrađenim ležajem
HR 3/8" okr - NP 10		
HR 1/2" okr - NP 13		
HR 5/8" okr - NP 16		
HR 3/4" okr - NP 19		
HR1" okr - NP 25		



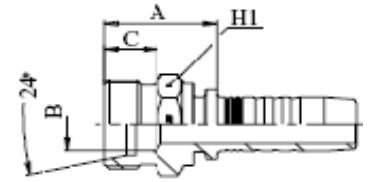
J1 M	CEL	DIN 3853
J1 M12x1,5 - NP 5	CEL 6 - L	
J1 M12x1,5 - NP 6	CEL 6 - L	
J1 M14x1,5 - NP 5	CEL 8 - L	
J1 M14x1,5 - NP 6	CEL 8 - L	
J1 M16x1,5 - NP 6	CEL 10 - L	
J1 M16x1,5 - NP 8	CEL 10 - L	
J1 M16x1,5 - NP 10	CEL 10 - L	
J1 M18x1,5 - NP 8	CEL 12 - L	



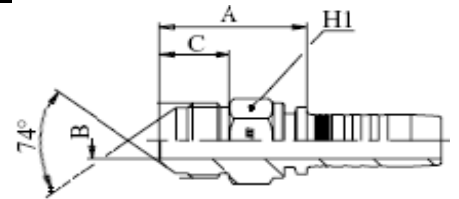
J1 M18x1,5 - NP 10	CEL 12 - L
J1 M22x1,5 - NP 10	CEL 15 - L
J1 M22x1,5 - NP 13	CEL 15 - L
J1 M26x1,5 - NP 13	CEL 18 - L
J1 M26x1,5 - NP 16	CEL 18 - L
J1 M30x2 - NP 16	CEL 22 - L
J1 M30x2 - NP 19	CEL 22 - L
J1 M36x2 - NP 25	CEL 28 - L
J1 M45x2 - NP 32	CEL 35 - L
J1 M52x2 - NP 38	CEL 42 - L



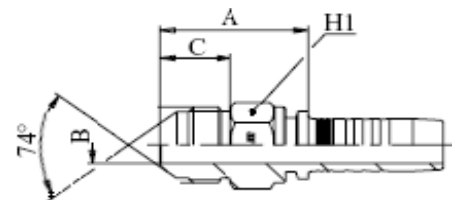
J2 M	CES	DIN 3853
J2 M14x1,5 - NP 6	CES 6 - S	
J2 M16x1,5 - NP 6	CES 8 - S	
J2 M18x1,5 - NP 6	CES 10 - S	
J2 M18x1,5 - NP 8	CES 10 - S	
J2 M20x1,5 - NP 8	CES 12 - S	
J2 M20x1,5 - NP 10	CES 12 - S	
J2 M22x1,5 - NP 10	CES 14 - S	
J2 M24x1,5 - NP 13	CES 16 - S	
J2 M30x2 - NP 16	CES 20 - S	
J2 M30x2 - NP 19	CES 20 - S	
J2 M36x2 - NP 19	CES 25 - S	
J2 M36x2 - NP 25	CES 25 - S	
J2 M42x2 - NP 25	CES 30 - S	
J2 M52x2 - NP 32	CES 38 - S	



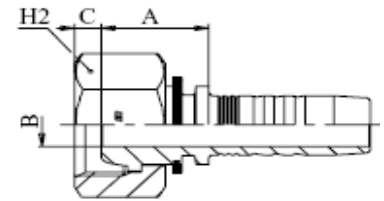
K M	-	-
K M14x1,5 - NP 6		
K M16x1,5 - NP 8		
K M18x1,5 - NP 10		
K M22x1,5 - NP 13		
K M27x2 - NP 16		
K M33x2 - NP 19		
K M39x2 - NP 25		



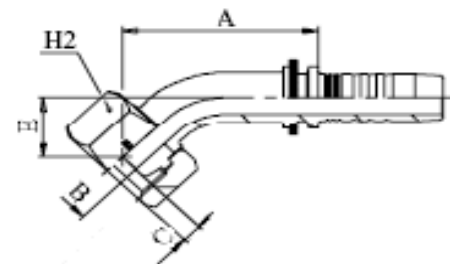
K UN/UNF	AGJ (JIC)	SAE J514
K UNF 7/16" - NP 6		
K UNF 1/ 2" - NP 6		
K UNF 1/ 2" - NP 8		
K UNF 9/16" - NP 6		
K UNF 9/16" - NP 8		
K UNF 9/16" - NP 10		
K UNF 5/ 8" - NP 10		
K UNF 3/ 4" - NP 10		
K UNF 3/ 4" - NP 13		
K UNF 7/ 8" - NP 10		
K UNF 7/ 8" - NP 13		
K UNF 7/ 8" - NP 16		
K UN1.1/16" - NP 13		
K UN1.1/16" - NP 16		
K UN1.1/16" - NP 19		
K UN1.1/16" - NP 25		
K UN1.3/16" - NP 19		
K UN1.5/16" - NP 19		
K UN1.5/16" - NP 25		
K UN1.5/ 8" - NP 25		
K UN1.5/ 8" - NP 32		
K UN1.7/ 8" - NP 38		



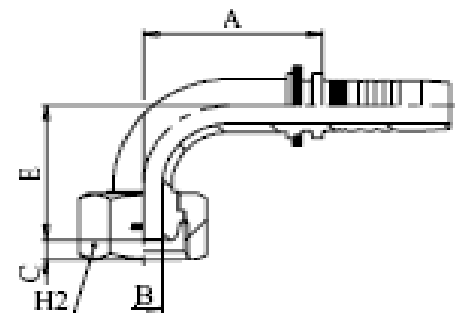
M1 M	DKOL	DIN 3865
M1 M12x1,5 - NP 3	DKOL 6 - L	
M1 M12x1,5 - NP 5	DKOL 6 - L	
M1 M12x1,5 - NP 6	DKOL 6 - L	
M1 M14x1,5 - NP 5	DKOL 8 - L	
M1 M14x1,5 - NP 6	DKOL 8 - L	
M1 M14x1,5 - NP 8	DKOL 8 - L	
M1 M16x1,5 - NP 6	DKOL 10 - L	
M1 M16x1,5 - NP 8	DKOL 10 - L	
M1 M16x1,5 - NP 10	DKOL 10 - L	
M1 M18x1,5 - NP 6	DKOL 12 - L	
M1 M18x1,5 - NP 8	DKOL 12 - L	
M1 M18x1,5 - NP 10	DKOL 12 - L	
M1 M18x1,5 - NP 13	DKOL 12 - L	
M1 M22x1,5 - NP 10	DKOL 15 - L	
M1 M22x1,5 - NP 13	DKOL 15 - L	
M1 M26x1,5 - NP 13	DKOL 18 - L	
M1 M26x1,5 - NP 16	DKOL 18 - L	
M1 M30x2 - NP 16	DKOL 22 - L	
M1 M30x2 - NP 19	DKOL 22 - L	
M1 M36x2 - NP 19	DKOL 28 - L	
M1 M36x2 - NP 25	DKOL 28 - L	
M1 M45x2 - NP 32	DKOL 35 - L	
M1 M52x2 - NP 38	DKOL 42 - L	



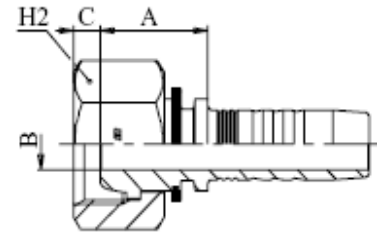
M1 M L45	DKOL - 45	DIN 3865
M1 M12x1,5 L45 NP 6	DKOL - 45 6 - L	
M1 M14x1,5 L45 NP 6	DKOL - 45 8 - L	
M1 M16x1,5 L45 NP 6	DKOL - 45 10 - L	
M1 M16x1,5 L45 NP 8	DKOL - 45 10 - L	
M1 M18x1,5 L45 NP 8	DKOL - 45 12 - L	
M1 M18x1,5 L45 NP 10	DKOL - 45 12 - L	
M1 M22x1,5 L45 NP 13	DKOL - 45 15 - L	
M1 M26x1,5 L45 NP 16	DKOL - 45 18 - L	
M1 M30x2 L45 NP 19	DKOL - 45 22 - L	
M1 M36x2 L45 NP 25	DKOL - 45 28 - L	
M1 M45x2 L45 NP 32	DKOL - 45 35 - L	
M1 M52x2 L45 NP 38	DKOL - 45 42 - L	



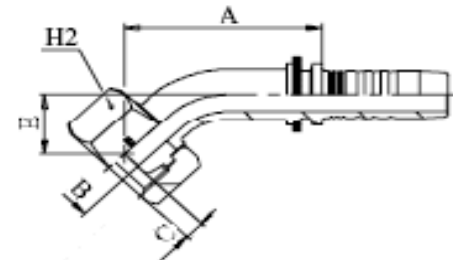
M1 M L90	DKOL - 90	DIN 3865
M1 M12x1,5 L90 NP 5	DKOL - 90 6 - L	
M1 M12x1,5 L90 NP 6	DKOL - 90 6 - L	
M1 M14x1,5 L90 NP 5	DKOL - 90 8 - L	
M1 M14x1,5 L90 NP 6	DKOL - 90 8 - L	
M1 M16x1,5 L90 NP 6	DKOL - 90 10 - L	
M1 M16x1,5 L90 NP 8	DKOL - 90 10 - L	
M1 M16x1,5 L90 NP 10	DKOL - 90 10 - L	
M1 M18x1,5 L90 NP 6	DKOL - 90 12 - L	
M1 M18x1,5 L90 NP 8	DKOL - 90 12 - L	
M1 M18x1,5 L90 NP 10	DKOL - 90 12 - L	
M1 M22x1,5 L90 NP 10	DKOL - 90 15 - L	
M1 M22x1,5 L90 NP 13	DKOL - 90 15 - L	
M1 M26x1,5 L90 NP 13	DKOL - 90 18 - L	
M1 M26x1,5 L90 NP 16	DKOL - 90 18 - L	
M1 M30x2 L90 NP 16	DKOL - 90 22 - L	
M1 M30x2 L90 NP 19	DKOL - 90 22 - L	
M1 M36x2 L90 NP 19	DKOL - 90 28 - L	
M1 M36x2 L90 NP 25	DKOL - 90 28 - L	
M1 M45x2 L90 NP 32	DKOL - 90 35 - L	
M1 M52x2 L90 NP 38	DKOL - 90 42 - L	



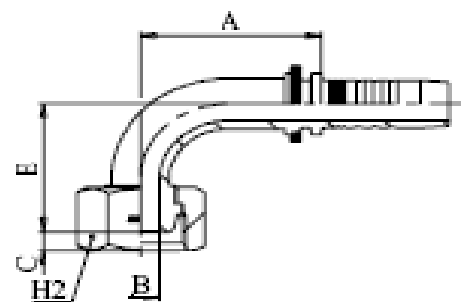
M2 M	DKOS	DIN 3865
M2 M14x1,5 - NP 6	DKOS 6 - S	
M2 M16x1,5 - NP 5	DKOS 8 - S	
M2 M16x1,5 - NP 6	DKOS 8 - S	
M2 M18x1,5 - NP 6	DKOS 10 - S	
M2 M18x1,5 - NP 8	DKOS 10 - S	
M2 M20x1,5 - NP 8	DKOS 12 - S	
M2 M20x1,5 - NP 10	DKOS 12 - S	
M2 M20x1,5 - NP 13	DKOS 12 - S	
M2 M22x1,5 - NP 10	DKOS 14 - S	
M2 M22x1,5 - NP 13	DKOS 14 - S	
M2 M24x1,5 - NP 13	DKOS 16 - S	
M2 M30x2 - NP 16	DKOS 20 - S	
M2 M30x2 - NP 19	DKOS 20 - S	
M2 M36x2 - NP 19	DKOS 25 - S	
M2 M36x2 - NP 25	DKOS 25 - S	
M2 M42x2 - NP 25	DKOS 30 - S	
M2 M52x2 - NP 32	DKOS 38 - S	



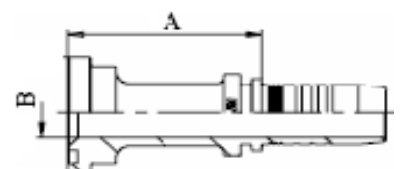
M2 M L45	DKOS - 45	DIN 3865
M2 M16x1,5 L45 NP 6	DKOS - 45 8 - S	
M2 M18x1,5 L45 NP 6	DKOS - 45 10 - S	
M2 M18x1,5 L45 NP 8	DKOS - 45 10 - S	
M2 M20x1,5 L45 NP 8	DKOS - 45 12 - S	
M2 M20x1,5 L45 NP 10	DKOS - 45 12 - S	
M2 M22x1,5 L45 NP 10	DKOS - 45 14 - S	
M2 M22x1,5 L45 NP 13	DKOS - 45 14 - S	
M2 M24x1,5 L45 NP 13	DKOS - 45 16 - S	
M2 M30x2 L45 NP 16	DKOS - 45 20 - S	
M2 M30x2 L45 NP 19	DKOS - 45 20 - S	
M2 M36x2 L45 NP 19	DKOS - 45 25 - S	
M2 M36x2 L45 NP 25	DKOS - 45 25 - S	
M2 M42x2 L45 NP 25	DKOS - 45 30 - S	
M2 M52x2 L45 NP 32	DKOS - 45 38 - S	



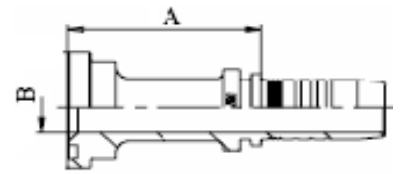
M2 M L90	DKOS - 90	DIN 3865
M2 M14x1,5 L90 NP 6	DKOS - 90 6 - S	
M2 M16x1,5 L90 NP 6	DKOS - 90 8 - S	
M2 M18x1,5 L90 NP 6	DKOS - 90 10 - S	
M2 M18x1,5 L90 NP 8	DKOS - 90 10 - S	
M2 M20x1,5 L90 NP 8	DKOS - 90 12 - S	
M2 M20x1,5 L90 NP 10	DKOS - 90 12 - S	
M2 M22x1,5 L90 NP 10	DKOS - 90 14 - S	
M2 M22x1,5 L90 NP 13	DKOS - 90 14 - S	
M2 M24x1,5 L90 NP 13	DKOS - 90 16 - S	
M2 M30x2 L90 NP 16	DKOS - 90 20 - S	
M2 M30x2 L90 NP 19	DKOS - 90 20 - S	
M2 M36x2 L90 NP 19	DKOS - 90 25 - S	
M2 M36x2 L90 NP 25	DKOS - 90 25 - S	
M2 M42x2 L90 NP 25	DKOS - 90 30 - S	
M2 M52x2 L90 NP 32	DKOS - 90 38 - S	



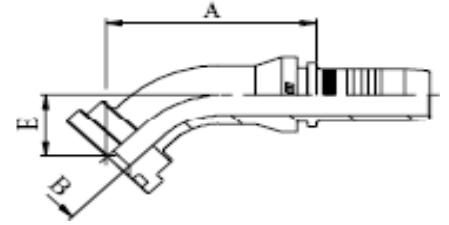
P1	SFL	SAE 3000
P1 30 - NP 13	SFL 1/2"	
P1 38 - NP 13	SFL 3/4"	
P1 38 - NP 16	SFL 3/4"	
P1 38 - NP 19	SFL 3/4"	
P1 45 - NP 16	SFL 1"	
P1 45 - NP 19	SFL 1"	
P1 45 - NP 25	SFL 1"	
P1 51 - NP 25	SFL 1.1/4"	
P1 51 - NP 32	SFL 1.1/4"	
P1 60 - NP 32	SFL 1.1/2"	



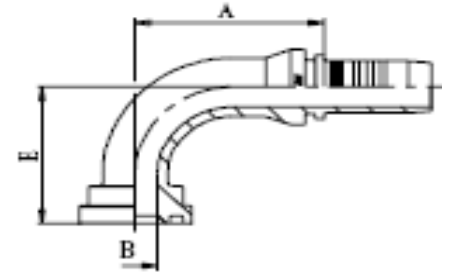
P1 60 - NP 38	SFL 1.1/2"
P1 72 - NP 38	SFL 2"
P1 72 - NP 50	SFL 2"
P1 84 - NP 50	SFL 2.1/2"



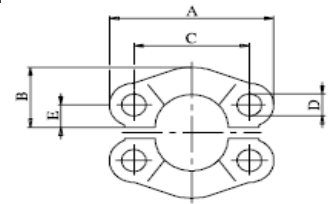
P1 L45	SFL - 45	SAE 3000
P1 30 L45 NP 13	SFL - 45 1/2"	
P1 38 L45 NP 13	SFL - 45 3/4"	
P1 38 L45 NP 16	SFL - 45 3/4"	
P1 38 L45 NP 19	SFL - 45 3/4"	
P1 45 L45 NP 16	SFL - 45 1"	
P1 45 L45 NP 19	SFL - 45 1"	
P1 45 L45 NP 25	SFL - 45 1"	
P1 51 L45 NP 25	SFL - 45 1.1/4"	
P1 51 L45 NP 32	SFL - 45 1.1/4"	
P1 60 L45 NP 32	SFL - 45 1.1/2"	
P1 60 L45 NP 38	SFL - 45 1.1/2"	
P1 72 L45 NP 38	SFL - 45 2"	
P1 72 L45 NP 50	SFL - 45 2"	



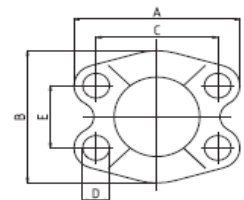
P1 L90	SFL - 90	SAE 3000
P1 30 L90 NP 13	SFL - 90 1/2"	
P1 38 L90 NP 13	SFL - 90 3/4"	
P1 38 L90 NP 16	SFL - 90 3/4"	
P1 38 L90 NP 19	SFL - 90 3/4"	
P1 45 L90 NP 16	SFL - 90 1"	
P1 45 L90 NP 19	SFL - 90 1"	
P1 45 L90 NP 25	SFL - 90 1"	
P1 51 L90 NP 25	SFL - 90 1.1/4"	
P1 51 L90 NP 32	SFL - 90 1.1/4"	
P1 60 L90 NP 32	SFL - 90 1.1/2"	
P1 60 L90 NP 38	SFL - 90 1.1/2"	
P1 72 L90 NP 38	SFL - 90 2"	
P1 72 L90 NP 50	SFL - 90 2"	



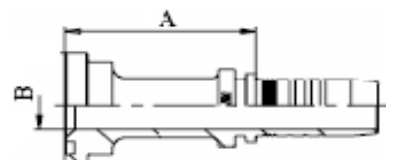
Stega dvodjelna za P1	FL	SAE 3000
P1 30 stega dvodjelna	FL 1/2"	
P1 38 stega dvodjelna	FL 3/4"	
P1 45 stega dvodjelna	FL 1"	
P1 51 stega dvodjelna	FL 1.1/4"	
P1 60 stega dvodjelna	FL 1.1/2"	
P1 72 stega dvodjelna	FL 2"	
P1 84 stega dvodjelna	FL 2.1/2"	



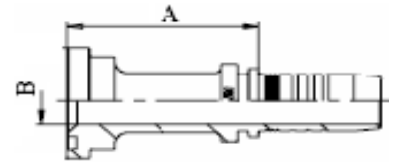
Stega jednodjelna za P1	FL	SAE 3000
P1 30 stega jednodjelna	1/2" - L	
P1 38 stega jednodjelna	3/4" - L	
P1 45 stega jednodjelna	1" - L	
P1 51 stega jednodjelna	1.1/4" - L	
P1 60 stega jednodjelna	1.1/2" - L	
P1 72 stega jednodjelna	2" - L	
P1 84 stega jednodjelna	FL 2.1/2"	



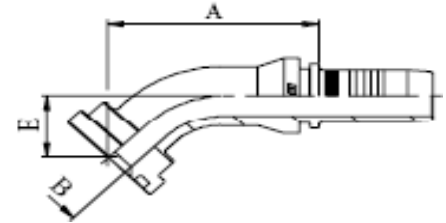
P2	SFS	SAE 6000
P2 32 - NP 13	SFS 1/2"	
P2 32 - NP 16	SFS 1/2"	
P2 41 - NP 13	SFS 3/4"	
P2 41 - NP 16	SFS 3/4"	
P2 41 - NP 19	SFS 3/4"	
P2 41 - NP 25	SFS 3/4"	
P2 48 - NP 19	SFS 1"	
P2 48 - NP 25	SFS 1"	



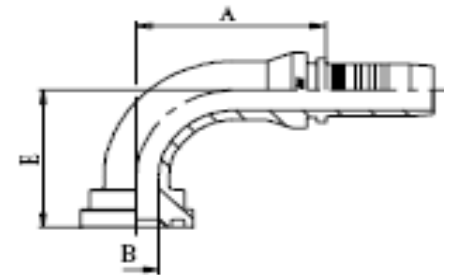
P2 48 - NP 32	SFS 1"
P2 54 - NP 25	SFS 1.1/4"
P2 54 - NP 32	SFS 1.1/4"
P2 64 - NP 32	SFS 1.1/2"
P2 64 - NP 38	SFS 1.1/2"
P2 80 - NP 50	SFS 2"



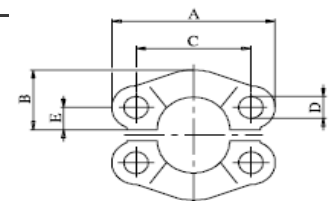
P2 L45	SFS - 45	SAE 6000
P2 32 L45 NP 13	SFS - 45 1/2"	
P2 32 L45 NP 16	SFS - 45 1/2"	
P2 41 L45 NP 13	SFS - 45 3/4"	
P2 41 L45 NP 16	SFS - 45 3/4"	
P2 41 L45 NP 19	SFS - 45 3/4"	
P2 48 L45 NP 19	SFS - 45 1"	
P2 48 L45 NP 25	SFS - 45 1"	
P2 54 L45 NP 25	SFS - 45 1.1/4"	
P2 54 L45 NP 32	SFS - 45 1.1/4"	
P2 64 L45 NP 32	SFS - 45 1.1/2"	
P2 64 L45 NP 38	SFS - 45 1.1/2"	
P2 80 L45 NP 50	SFS - 45 2"	



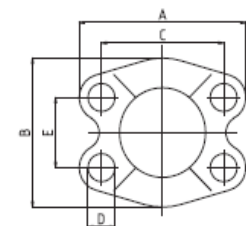
P2 L90	SFS - 90	SAE 6000
P2 32 L90 NP 13	SFS - 90 1/2"	
P2 32 L90 NP 16	SFS - 90 1/2"	
P2 41 L90 NP 13	SFS - 90 3/4"	
P2 41 L90 NP 16	SFS - 90 3/4"	
P2 41 L90 NP 19	SFS - 90 3/4"	
P2 41 L90 NP 25	SFS - 90 3/4"	
P2 48 L90 NP 19	SFS - 90 1"	
P2 48 L90 NP 25	SFS - 90 1"	
P2 48 L90 NP 32	SFS - 90 1"	
P2 54 L90 NP 25	SFS - 90 1.1/4"	
P2 54 L90 NP 32	SFS - 90 1.1/4"	
P2 64 L90 NP 32	SFS - 90 1.1/2"	
P2 64 L90 NP 38	SFS - 90 1.1/2"	
P2 80 L90 NP 50	SFS - 90 2"	



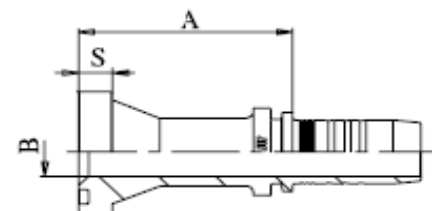
Stega dvodjelna za P2	FS	SAE 6000
P2 32 stega dvodjelna	FS 1/2"	
P2 41 stega dvodjelna	FS 3/4"	
P2 48 stega dvodjelna	FS 1"	
P2 54 stega dvodjelna	FS 1.1/4"	
P2 64 stega dvodjelna	FS 1.1/2"	
P2 80 stega dvodjelna	FS 2"	



Stega jednodjelna za P2	-	SAE 6000
P2 32 stega jednodjelna	1/2" - S	
P2 41 stega jednodjelna	3/4" - S	
P2 48 stega jednodjelna	1" - S	
P2 54 stega jednodjelna	1.1/4" - S	
P2 64 stega jednodjelna	1.1/2" - S	
P2 80 stega jednodjelna	2" - S	



PCAT	SFC	CATERPILAR
PCAT 41 - NP 19	SFC 3/4"	
PCAT 48 - NP 19	SFC 1"	
PCAT 48 - NP 25	SFC 1"	
PCAT 54 - NP 25	SFC 1.1/4"	
PCAT 54 - NP 32	SFC 1.1/4"	
PCAT 64 - NP 32	SFC 1.1/2"	
PCAT 64 - NP 38	SFC 1.1/2"	



PCAT L45	SFC - 45	CATERPILAR
PCAT 41 L45 NP 19	SFC - 45 3/4"	
PCAT 48 L45 NP 19	SFC - 45 1"	
PCAT 48 L45 NP 25	SFC - 45 1"	
PCAT 54 L45 NP 25	SFC - 45 1.1/4"	
PCAT 54 L45 NP 32	SFC - 45 1.1/4"	

PCAT L90	SFC - 90	CATERPILAR
PCAT 41 L90 NP 19	SFC - 90 3/4"	
PCAT 48 L90 NP 19	SFC - 90 3/4"	
PCAT 48 L90 NP 25	SFC - 90 1"	
PCAT 54 L90 NP 25	SFC - 90 1"	
PCAT 54 L90 NP 32	SFC - 90 1.1/4"	

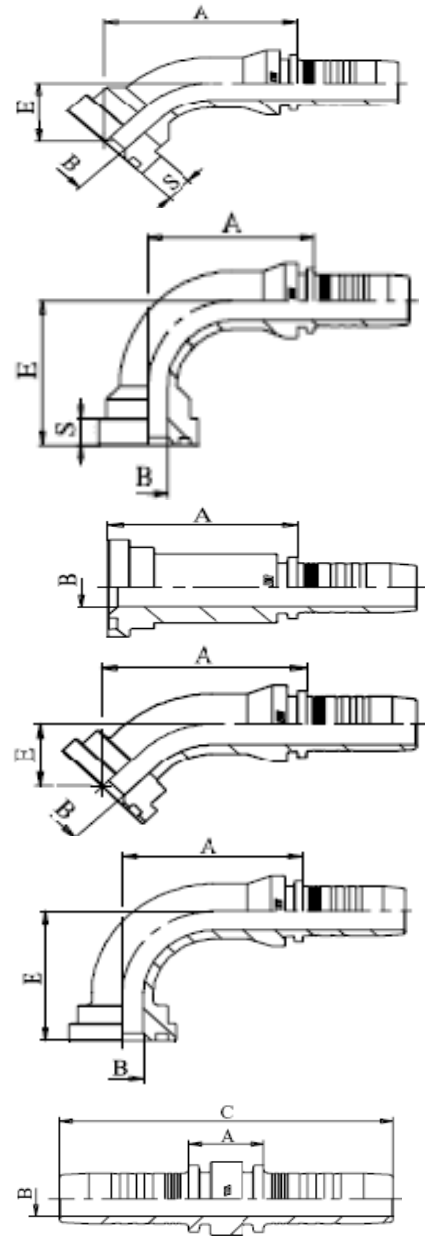
PKOM	SFK	KOMATSU
PKOM 34 - NP 16		

PKOM L45	SFK 45	KOMATSU
PKOM 34 L45 NP 16		

PKOM L90	SFK - 90	KOMATSU
PKOM 34 L90 NP 16		

NP - NP	-	-
---------	---	---

NP 5 - NP 5
 NP 6 - NP 6
 NP 8 - NP 8
 NP 10 - NP 10
 NP 13 - NP 13
 NP 16 - NP 16
 NP 19 - NP 19
 NP 25 - NP 25



- Napomene: ***** Okretni priključci s ugrađenim ležajem se preporučuju svugdje gdje dolazi do uvijanja cijevi. Radnog su tlaka 350 bara, omogućavaju 15 rotacija u minuti i to sa maksimalnim kutem od 40°.
- Slijedeći priključci imaju u konusu glave ugrađen O-ring koji omogućava bolje brtvljenje:
 - Svi priključci tipa M1M (oznaka DKOL), M1M L45 (DKOL - 45), M1M L90 (DKOL - 90), M2M (DKOS), M2M L45 (DKOS - 45), M2M L90 (DKOS - 90) i AR L90K (DKOR - 90-K)
 - Priključci tipa AR (oznaka DKOR), AR L45 (DKOR - 45) i AR L90 (DKOR - 90) sa navojem R1.1/4" i većim.